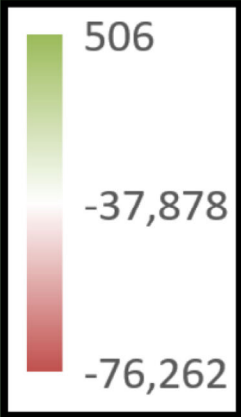
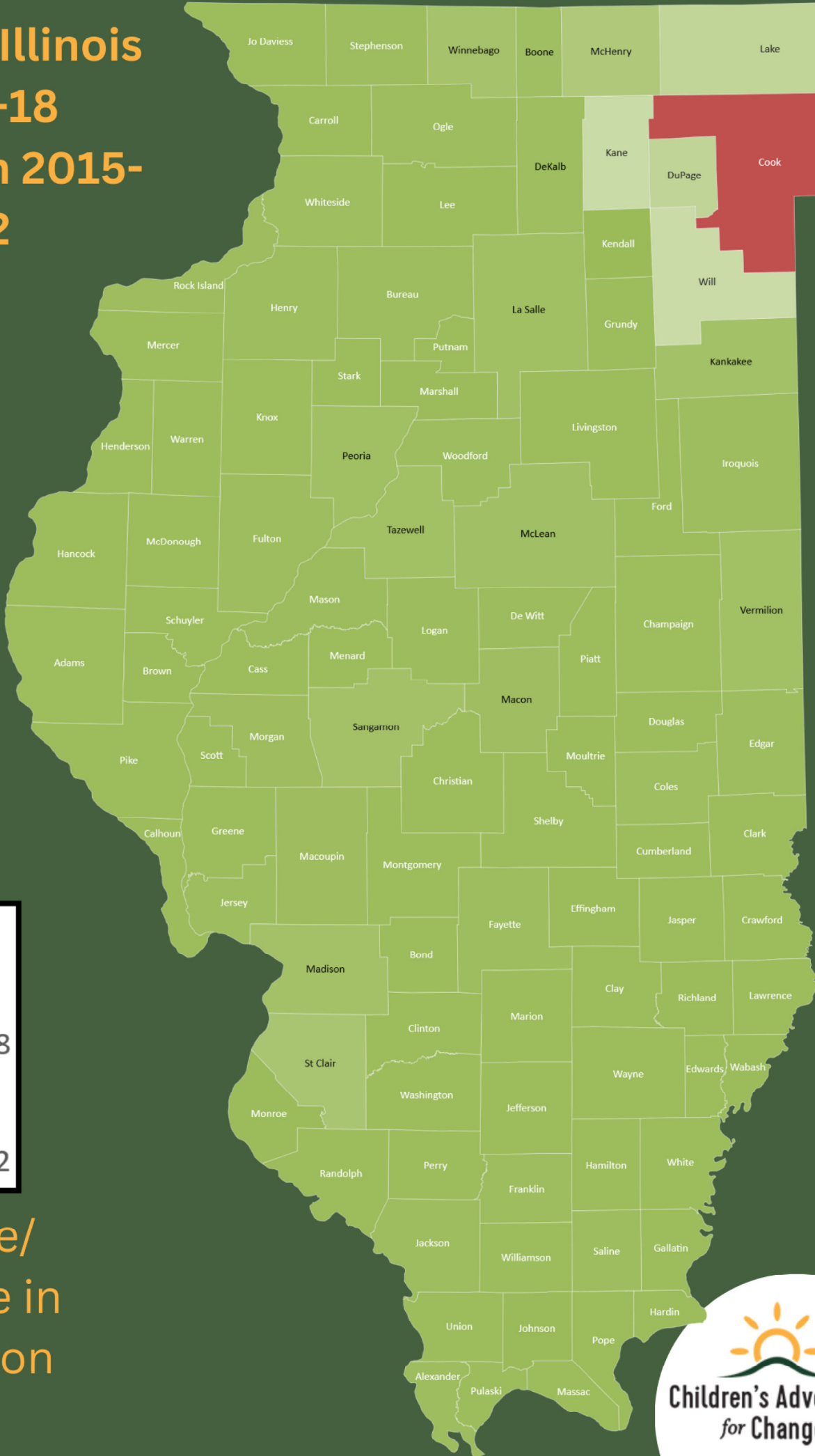


Change in Illinois Under-18 Population 2015- 2022



Increase/
Decrease in
Population
(+/-)

Change in Illinois Under-18 Population 2015-2022

Largest Increase in Population

Kendall County	506
Johnson County	358
Brown County	72
Effingham County	39*
Moultrie County	22*

* Significant margin of error

Largest Decrease in Population

Cook County	-76,262
Will County	-17,842
Kane County	-17,300
Lake County	-14,163
DuPage County	-13,754
McHenry County	-7,050
Saint Clair County	-5,357
Winnebago County	-3,536
Sangamon County	-2,917
Madison County	-2,848

Largest Decrease in Population (Percentage)

Hardin County	-40%
Alexander County	-35%
Pulaski County	-21%

Illinois (total):

2015: 2,960,185

2019: 2,814,679 (-5%)

2022: 2,716,206 (-8%)

www.childrensadvocates.org

Source:
data.census.gov;
based on 2022 and
2015 5-Year American
Community Surveys

